

## Race Release & Race Pull Assembly Instructions

Thank you for purchasing a Race Release set.

The following guide will explain how to make the necessary modifications to enable fitting of the Race Release and Race Pull classic mini door handles.

An assumption is made that you have access to basic hand tools and you are competent at using them. If in doubt, seek professional guidance from a suitably qualified mechanic.

### Tools required:

- 5 or 6mm drill bits
- 4mm drill bit
- Philips screwdriver
- Sharp knife
- Hacksaw blade (A dremel with a cut-off blade is useful if you have one)
- 3mm Allen Key
- 2.5mm Allen Key

### Race Release Fitting

#### *Door Preparation*

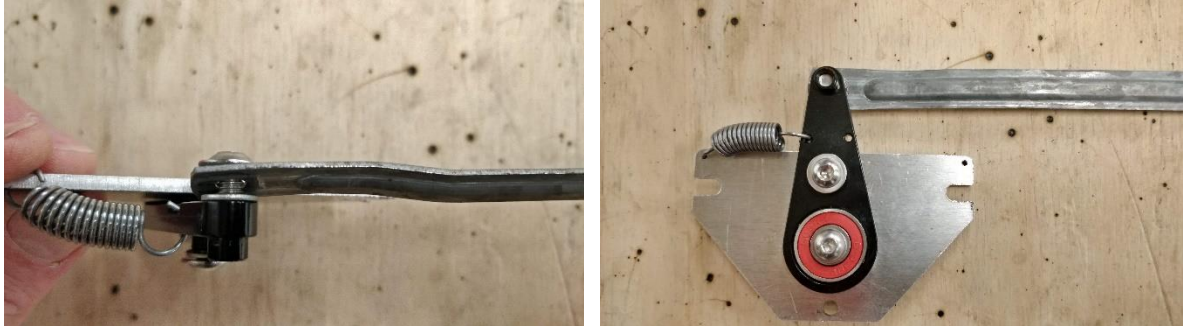
1. Remove all door furniture including the door card. Put the door card to one side for later modification.
2. Using a 5 or 6mm drill bit it is necessary to drill out the rivet attaching the lock release bar to the original door release mechanism. Take care to drill slowly to avoid damaging the door release lock bar.



3. Next, using a Philips screwdriver, remove the screws securing the old door release mechanism from the door.

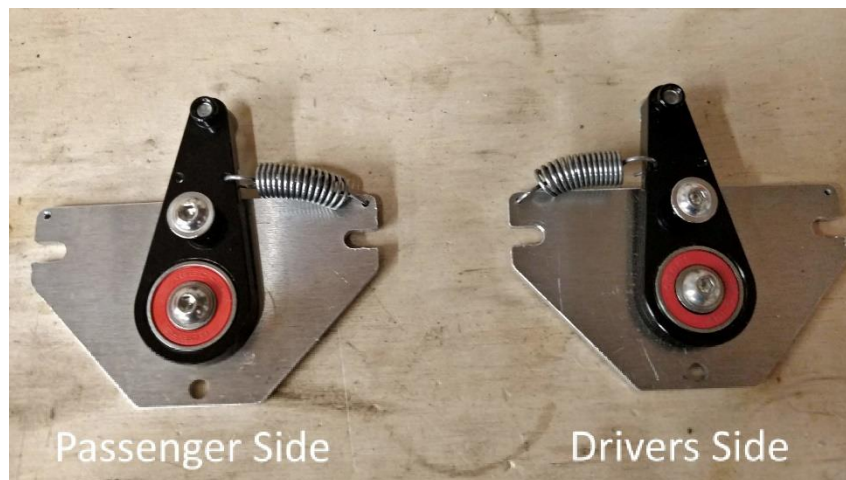
## Race Release & Race Pull Assembly Instructions

4. Attach the lock bar to the release mechanism arm using the supplied allen bolt and washer. Note the washer goes between the lock bar and mechanism arm and the bar goes behind the release arm.



5. Now the new door release mechanism can be secured to the door using the original screws and a Philips screwdriver.

Note. The release mechanisms are handed. The spring should be in the forward position, closest to the windscreen.



### *Door Card Preparation*

1. Using the supplied door card template, place on the rear of the door card making sure the curve is lined up with the hole in the door card.



## Race Release & Race Pull Assembly Instructions

2. Draw around the template including the two 4mm holes using a pencil or fine tip marker pen



3. Using a combination of a sharp knife and cutting blade such as a hacksaw blade, carefully cut out the marked section. The vinyl side should be trimmed last with a sharp knife.



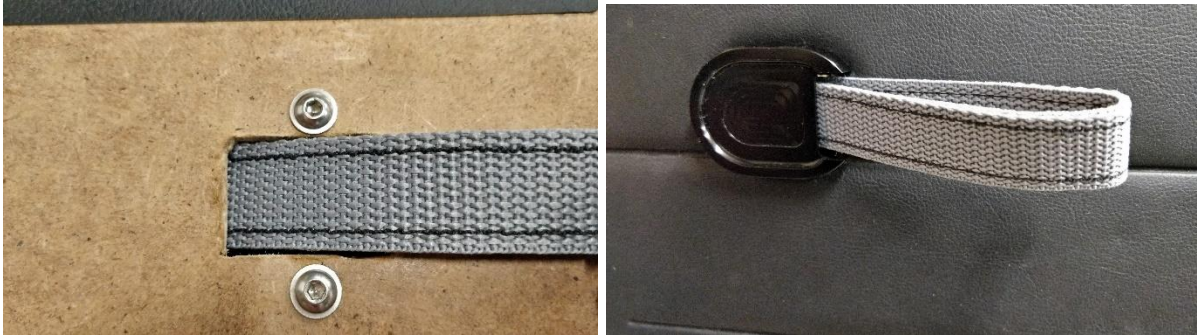
4. Using a 4mm drill bit, drill the two holes marked previously.
5. Next, attach the supplied door card capping using the supplied M4x8mm allen bolts with a 2.5mm allen key.



## Race Release & Race Pull Assembly Instructions

### *Final Fitting*

1. Holding the door card up against the door. Carefully feed the release strap through the cut-out and door capping from the rear.



2. Next, refit the door card to the door. Making sure the release strap is pulled all the way through and is free to move.

Note. If you have also purchased the Race Pulls, please follow the instructions below before refitting the door card.

3. Finally, re-attach the original door furniture.

### **Race Pull Fitting**

1. Remove all door furniture including the door card.
2. Remove the original door pull screw grommets for the door. This can be a little fiddly and is best done by putting your hand inside the door and squeezing the grommet together.
3. Insert the supplied door grommets that have been tapped to 5mm to accept the new allen bolts.



## Race Release & Race Pull Assembly Instructions

4. Reattach the door card and attach the race release using the supplied allen bolts and a 3mm allen key.

